



CAVA 1/3 BB

Moulded pulp tray designed for transport of special champagne bottles of 750 ml.



THE VALUE OF OUR WORK:



Ecological molded product made 100% recovered, recyclable and biodegradable.



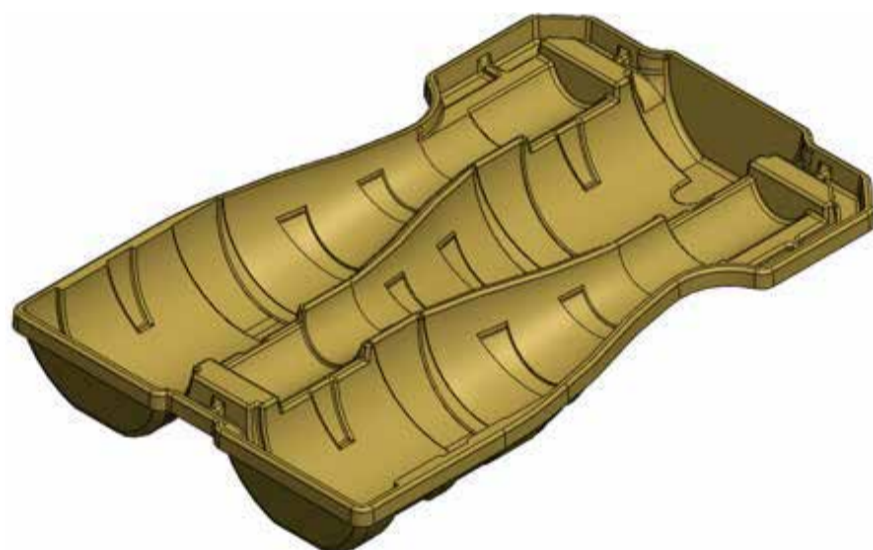
Easily handling & manipulation.



Nestables pieces, occupying little space at warehouse reducing costs.

Technical information

- Permissible diameters: Until: Ø 90 mm
- Dimensions: 370 x 265 x 41,5 mm
- Material: 100% recovered paper and cardboard.
- Observaciones: It allows apply some roof of bottles in a carton box.



Customized products

Since 1992 our staff has been able to develop the best solution for protecting products requiring special conditions of transport and storage.

Phone: +34 938 228 335
Fax: +34 938 228 869
comercial@decapulp.com

L'Ametlla de Casserres
Ctra. C-16, Km 90,5
08693 - CASSERRES (Barcelona)
www.decapulp.com

