



## CAVA 3/1

Moulded pulp tray designed for transport of champagne bottles of 750 ml.



### THE VALUE OF OUR WORK:



Ecological molded product made 100% recovered, recyclable and biodegradable.



Easily handling & manipulation.



Nestables pieces, occupying little space at warehouse reducing costs.

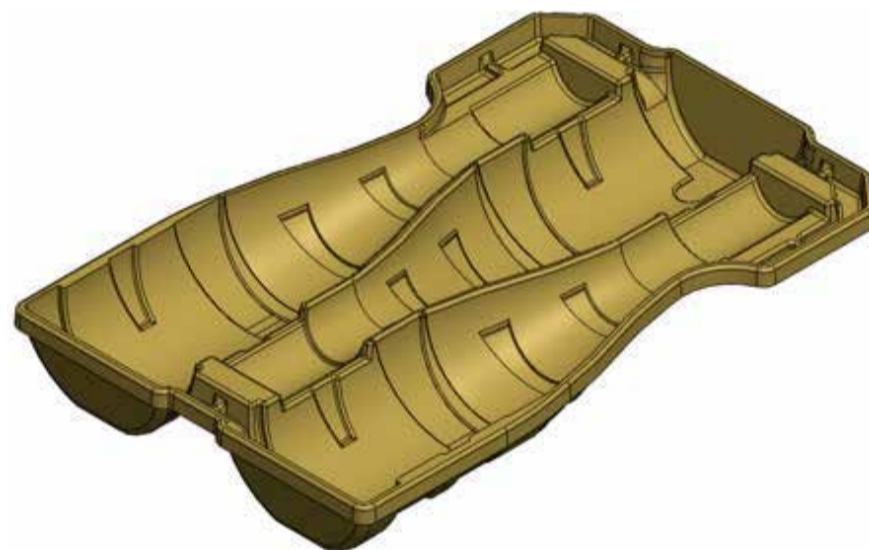
### Technical information

Permissible diameters: Until: Ø 90 mm

Dimensions: 384 x 236 x 47 mm

Material: 100% recovered paper and cardboard.

Observaciones: It allows apply some roof of bottles in a carton box.



### Costumized products

Since 1992 our staff has been able to develop the best solution for protecting products requiring special conditions of transport and storage.

Phone: +34 938 228 335  
Fax: +34 938 228 869  
comercial@decapulp.com

L'Ametlla de Casserres  
Ctra. C-16, Km 90,5  
08693 - CASSERRES (Barcelona)  
www.decapulp.com

